

# WG

The RICOH WG-Series: Hard-Working Cameras



## WG-6

Rugged high-performance model



RICOH WG-6 Orange



RICOH WG-6 Black



RICOH WG-80 Orange



RICOH WG-80 Black

## Toughness

### Shockproof to 2.1m

Shockproof performance helps WG-series cameras withstand accidental drops. The WG-6 has passed RICOH's in-house version of the Pentagon MIL-Standard 810F Method 516.5—Shock drop test (a drop of 2.1m onto a 5cm. thick plywood surface).



WG-6

Shockproof  
2.1m

WG-80

Shockproof  
1.6m

### 20m waterproof for up to 2 hours

WG-series cameras can be used worry-free on muddy jobsites, in the rain, or where the sea-spray flies—and any dirt or salt can be safely washed off with water.

Waterproof: IPX8/ JIS Class 8



WG-6

Waterproof  
20m

WG-80

Waterproof  
14m

### Withstands as cold as -10°C with dustproof quality

With a body that keeps out dust and sand, WG-series cameras can be used on demolition worksites and in other dusty locations, in cold regions, and on winter building sites.

Dustproof: IP 68/JIS Class 6



WG-6

Freezeproof  
-10°C

WG-80

Freezeproof  
-10°C

### A lens threaded for 37mm filters

A lens threaded for 37mm filters allows the WG-6 to be used with a wide variety of third-party filters, including PL filters and protective filters to avoid dust, scratches and condensation from the lens.

(WG-6 only)



WG-6



## Toughness

### RICOH-brand protector jackets

RICOH-brand protector jackets are available to shield the camera from impacts and scratches while improving your grip and making the buttons easier to operate.

WG-6

WG-80



O-CC173



O-CC1252

## Wide and Macro

### A wide-angle zoom lens with a minimum focal length of 28mm

A 28mm–140mm \*zoom lens offers a wide angle of view even in small spaces.

\*35 mm format equivalent.

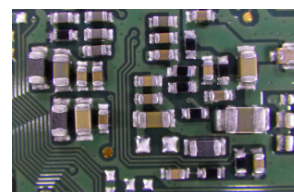
WG-6

WG-80



### Outstanding macro performance

Outstanding macro performance delivered by the camera's superior optics lets you shoot close-ups from ranges as little as 10cm for high-resolution photos that capture every detail of your subject, down to its texture and individual lumps and bumps. Perfect for photo records of precision machinery or wherever fine details need be noted.



Macro mode

WG-6

WG-80

### Support for wide-angle conversion lenses (WG-6 only)

Support for DW-5, 0.8X wide-angle conversion lenses allows focal lengths as wide as 22mm (35 mm format equivalent). The DW-5 not only lets you get large objects in the frame when shooting outdoors, but helps you compose photographs in cramped indoor spaces that offer a limited choice of vantage points. It's also waterproof\*, letting you use it in the rain.

\* JIS Class 7.

Note: The WG-6 attached with DW-5 can be stored in the SC-900 camera case.

Note: The built-in flash cannot be used as the light will be blocked when the DW-5 is attached.

WG-6



Wide Conversion Lens DW-5



28mm



22mm

Note: Illustrations are concept art.

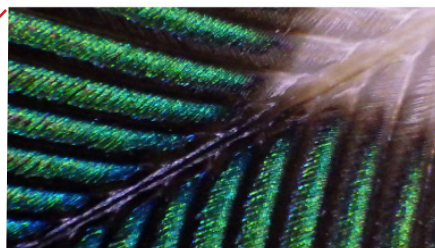
### Choose Digital Microscope mode to shoot from as close as 1cm

Choose Digital Microscope mode for ultra-close closeups lit by the camera's LED Ring Light, letting you easily record fine details invisible to the naked eye.

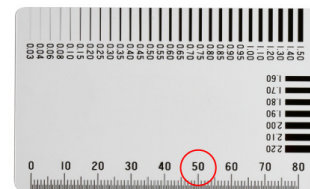
WG-6

WG-80

Comes with handy macro stand



WG-80: 2M resolution, shot at maximum magnification (optical + digital zoom)



Subject for comparison photos is a crack gauge scale



WG-80: 2M resolution, shot at maximum magnification (optical + digital zoom)



WG-80: 12M resolution (optical zoom; resolution of 12M in Digital Microscope mode available with WG-80 only)

Note: Image size for the WG-6 is fixed at 3M(4:3)

Recommended for educational institutions



## Low-Light Performance

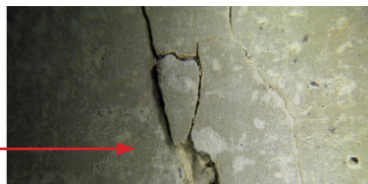
### A powerful, adjustable Ring Light

A powerful, adjustable Ring Light with LEDs that can be selectively turned on or off gives you clear, 3D views of cracks and other subjects best examined in close-ups. Brightness can be adjusted according to the distance to your subject, preventing loss of detail in highlights when using the monitor to frame shots under the floor and in tight spots.

WG-6



Taken using just the 3 LEDs on one side



Lighting adds shadows, throwing cracks and other details into relief (concept art).



Simulation of Ring Light in action

### Equipped for low-light situation

Equipped with the latest technology—a CMOS image sensor that works well at high sensitivities and an image processing engine that excels at noise reduction—WG-series cameras can be used for flashless low-light photography not only in darkened rooms but even at night with the faintest of light when the subject is too distant to be lit by the flash.

WG-6

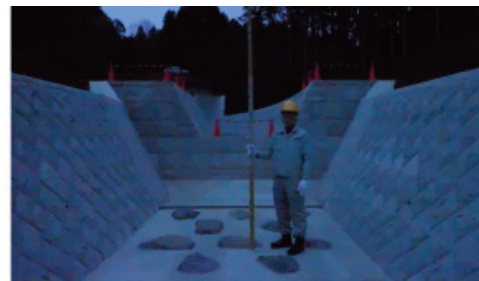


Actual brightness



Flash: AUTO  
ISO: AUTO (125-1600)

Note: Illustrations are concept art.



Flash: OFF  
ISO: 6400

Note: Illustrations are concept art.

The WG-6's excellent performance at high sensitivities lets you capture background details without using a flash.

## Worksite-Ready

### Quick access to frequently used settings (WG-6 only)

#### User modes

Settings can be saved to the U1 and U2 positions on the mode dial for instant recall. These modes offer a hassle-free way of optimizing settings to the job when you need to work fast to take photos for record keeping. It can also help ensure that different workers operating a shared camera use the same settings.

WG-6



#### A customizable ADJ button

The customizable ADJ button can be used to quickly view and change any one of the few core settings. The button can be assigned whatever feature you access most frequently

(at default settings, movie recording is assigned, but its role can be changed via the menus).

WG-6



ADJ button

Note: Monitor display is concept art.



## Designed for comfortable hold and ease of use

### WG-6



Featuring a secure grip designed for the best placement of your fingers on the front and back of the camera, you'll find the WG-6 easy to hold even while wearing gloves. The big buttons make it even easier to use.



The WG-6 features three strap eyelets for a choice of two-point strap configurations that keep the camera out of the way of your work.

### WG-80



The indentations at the center make the WG-80 easy to hold and help you keep your grip, even in the rain.



With its slim design, the WG-80 fits in the pockets of your work clothes.

## Webcam

### Equipped with a webcam function for high quality image distribution (WG-6 only)

#### WG-6

Webcam function will start just by connecting the camera and computer with the supplied USB cable. Images not possible with a camera built in to a computer can be achieved through the use of functions such as the Ring Light and the macro shooting function which enables images to be taken as close as up to 1cm from the subject.

#### Why use WG-6 as a Webcam

- High image quality due to superior optical performance and image processing
- 5X optical zoom
- Share detail information such as the print in circuit boards, using macro mode which enables images as close as up to 1cm from the subject.
- Useful Ring Light illuminating the subject in dark places or locations hidden by shadows.



Use for record-keeping on construction or building sites and in the lab, warehouse, and many more work-related applications, including job or product inspection, project management, and advertising!



WG-6/WG-80 Comparison Chart

Toughness	WG-6	WG-80
Waterproof	20m	14m
Shockproof	2.1m	1.6m
Crushproof	100kgf	100kgf
Freezeproof	-10°C	-10°C
Filter support	Third-party protective filters can be used to protect the lens. PL filters can also be used.	-

Wide and Macro

Zoom lens	Approx. 28mm - 140mm*	Approx. 28mm - 140mm*
Wide Conversion Lens support	Supports DW-5 (optional accessory) for a combined focal length equivalent to 22mm*	-
Macro	0.1m–0.6m (over entire zoom range)	0.1m–0.6m (over entire zoom range)
Digital Microscope mode	Image size fixed at <b>3M (4 : 3)</b>	Image size can be selected from options ranging from <b>2M–12M (16 : 9)</b>

\*All focal lengths are 35mm format equivalent.

Low-Light Performance

High-sensitivity performance	<b>Excellent</b> Equipped with the latest image processing engine	<b>Good</b>
Ring Light	<b>Excellent</b> Equipped with 6 powerful, adjustable LEDs that can be selectively turned on or off, perfect not only for low-light macro photography but also for clear shots of cracks and other fine details.	<b>Good</b> The Ring Light can be turned on to provide additional lighting in some of the scene modes, including macro shooting. Brightness adjustment is also available.

Worksite-Ready

User mode	Settings can be saved to U1 and U2.	-
Customizable controls	Quick adjustment available via the ADJ button for any one of 6 selectable settings.	Green button only (1 setting)
	Green button	
Grip	<b>Excellent</b> Excellent grip provided by rear thumb position and finger pad on front of camera.	<b>Good</b> Central indentations for a secure grip, and a slim design that allows the camera to be placed securely in a pocket when not in use.
Rear buttons	Large, widely-spaced buttons that can be handled easily even with gloves on.	-
Outdoor View	√	√
Strap eyelets	Three eyelets for two-point suspension	One eyelet
Tripod Mount	<b>Excellent</b> Metal, situated in the center of the camera body	<b>Good</b> Plastic, situated at one end of the camera body

Other Features

Effective pixels	20 megapixels	16 megapixels
Sensitivity	ISO 125–6400	ISO 125–6400
Display size	3", aspect ratio 4:3	2.7", aspect ratio 16:9
Display resolution	1040K dots	230K dots
Display font quality	<b>Excellent</b> Easy-to-read outline font	<b>Good</b> Bitmap font
GPS	√	-
Movie recording	4K	Full HD
Movie shake reduction (SR)	Movie SR+	MovieSR
External interface	USB 3.0 (Type C), HDMI output terminal (Type D)	USB 2.0 (Micro B), HDMI output terminal (Type D)